

-  
**28 & 29**  
SEPTIEMBRE  
2023

# 6° CURSO PRÁCTICO CITOMETRÍA DE FLUJO

## Práctica de seguimiento de nuevas terapias

Lourdes Martín

*Centro de Investigación del Cáncer, Universidad de Salamanca*



# Monitoring CAR-T cell therapy by NGF

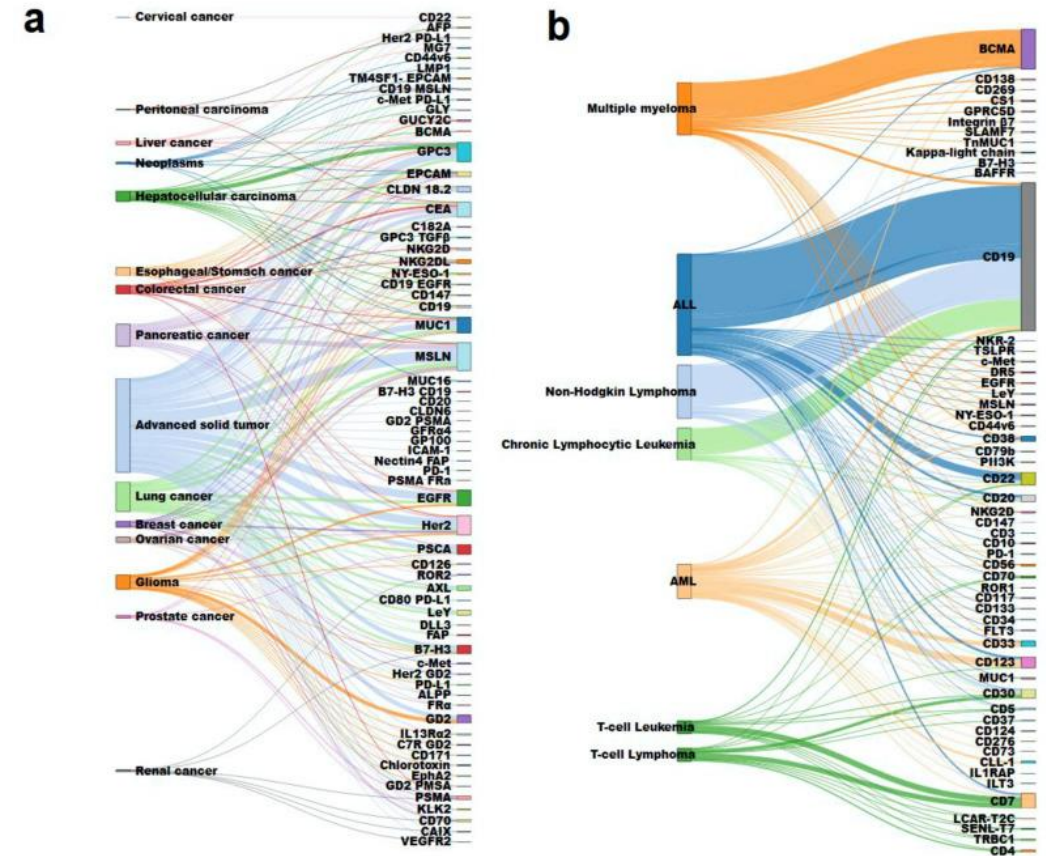
6 products  
approved by FDA & EMA

CD19				BCMA (CD269)	
Kymriah	Yescarta	Tecartus	Breyanzi	Abecma	Carvykti

BCP-ALL  
DLBCL  
Follicular  
Mantle-cell

MM

## 1561 CAR-T cells clinical trials



# Detection of CD19 CAR-T cells by NGF

Identify CAR target

Recommended sites for CAR-T cell detection products:

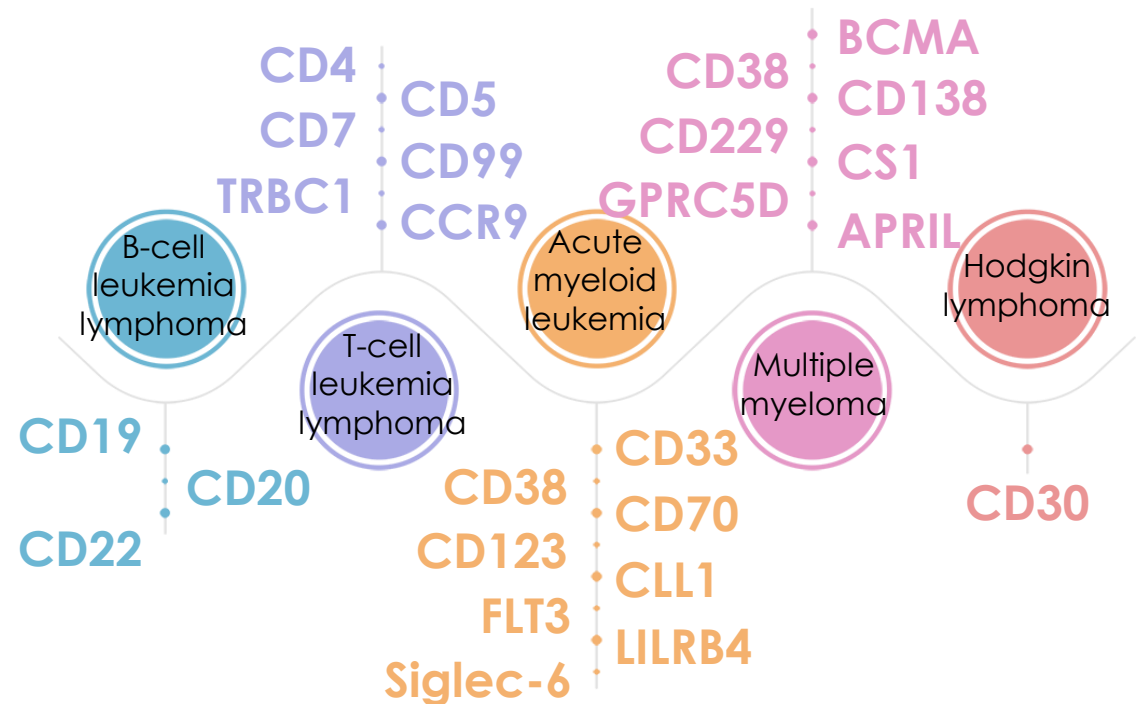


<https://www.acrobiosystems.com/>



Miltenyi Biotec

<https://www.miltenyibiotec.com/>



# Detection of CD19 CAR-T cells by NGF: different methods

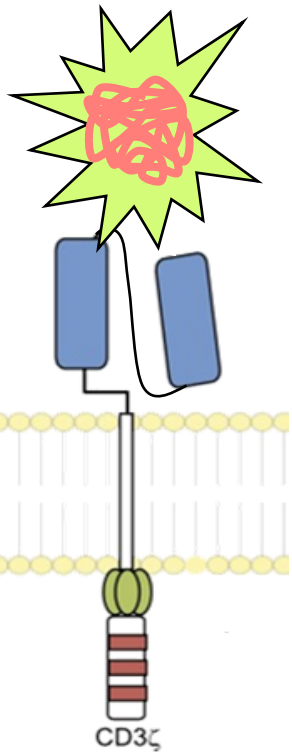
## PROTEIN

### CD19 protein

**Universal** means of detecting CARs with the same target antigens

Confirms that the CAR is **capable of binding** to its cognate antigen

**Simultaneous** labelling with **anti-CD19** for B-cell identification not feasible. Need for a longer two-step technique.



## ANTIBODY

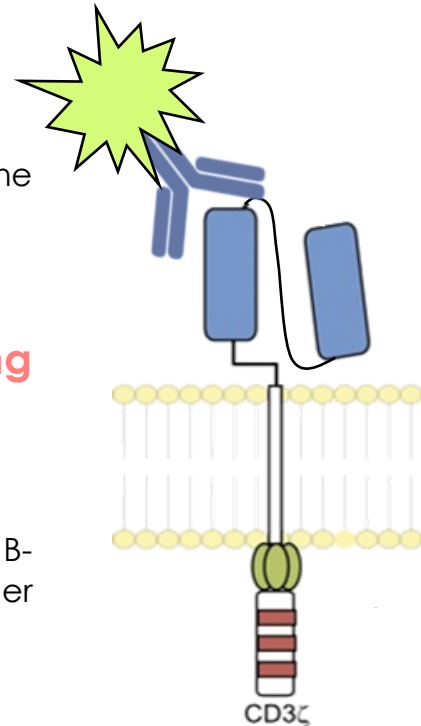
### Anti-FMC63 scFv

**Only** allows detection of CAR anti-CD19 scFv derived from FMC63 clone.

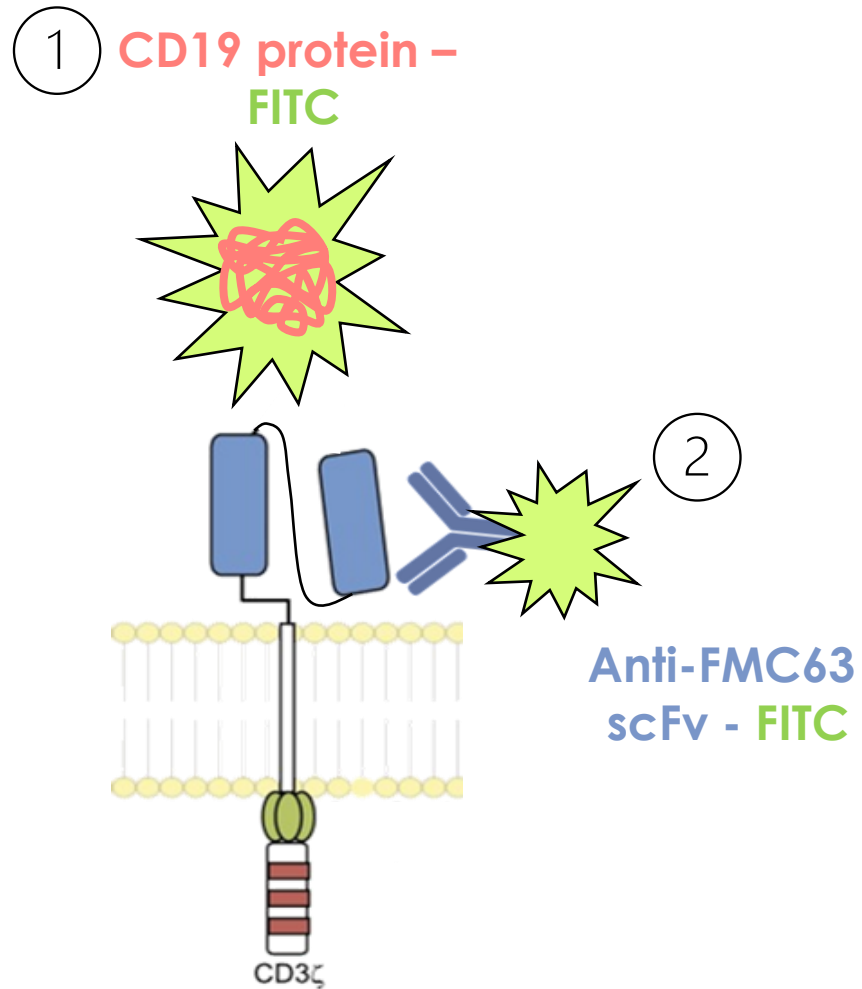
**Lack** of information on the CAR binding ability

Usually, **better** discriminating **signal**

**Simultaneous** labelling with **anti-CD19** for B-cell identification feasible.



# Detection of CD19 CAR-T cells by NGF: different methods

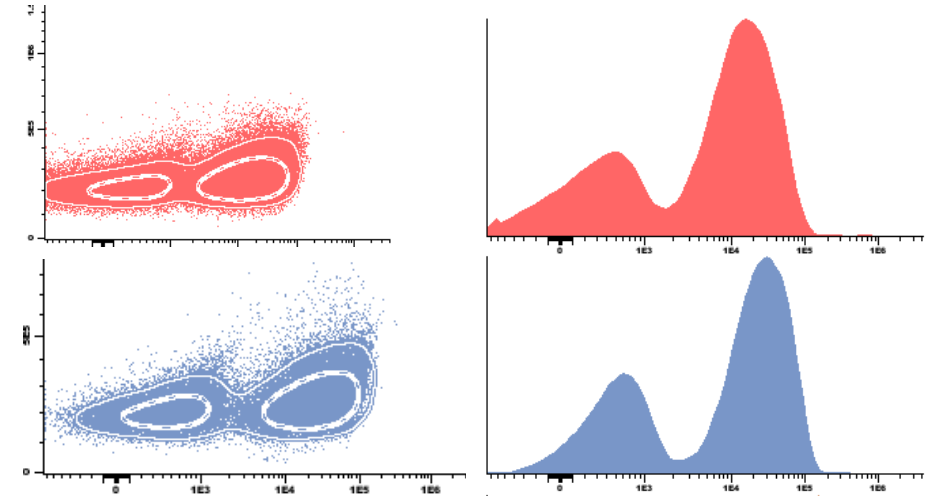


①

CD19 protein – FITC

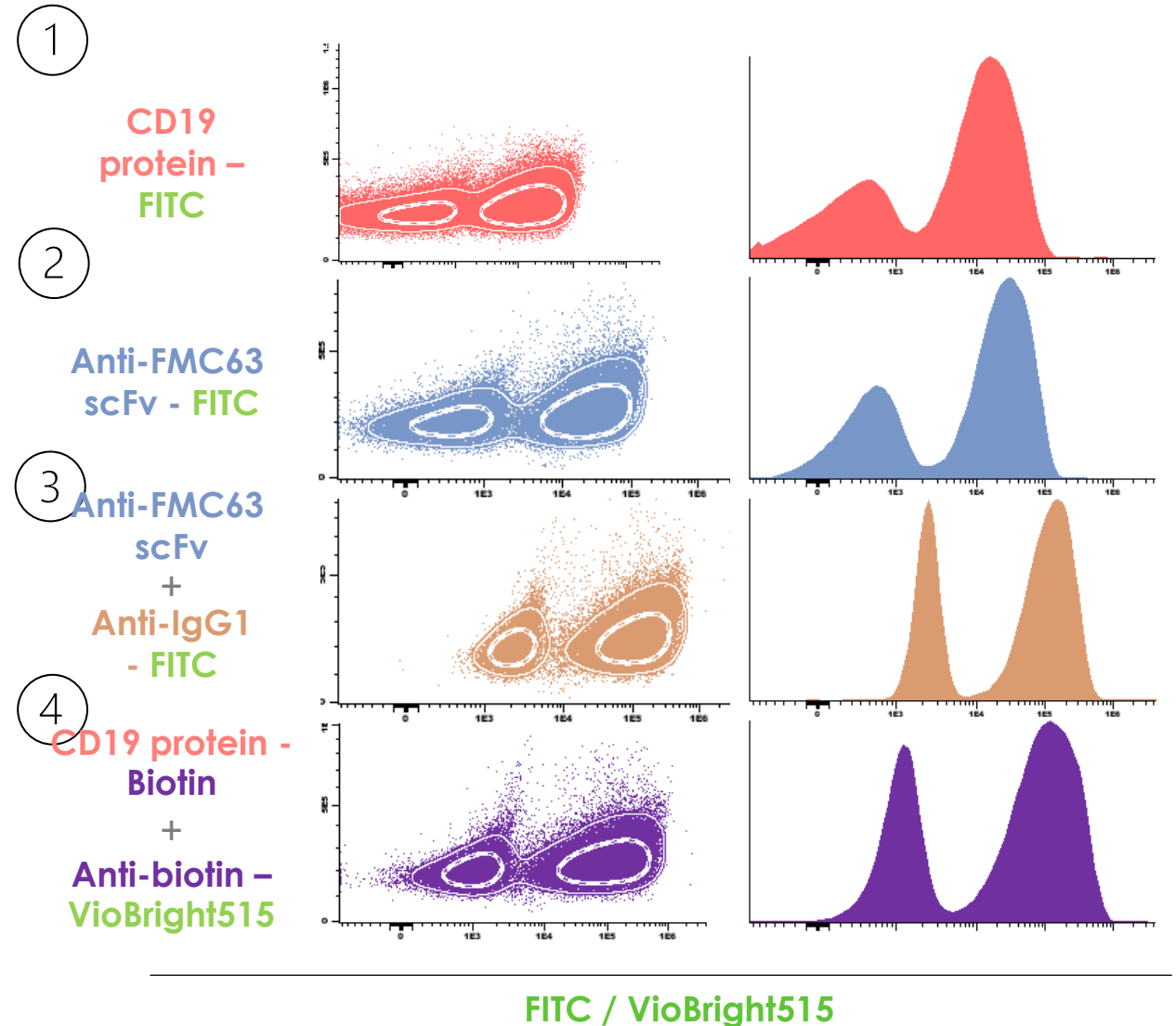
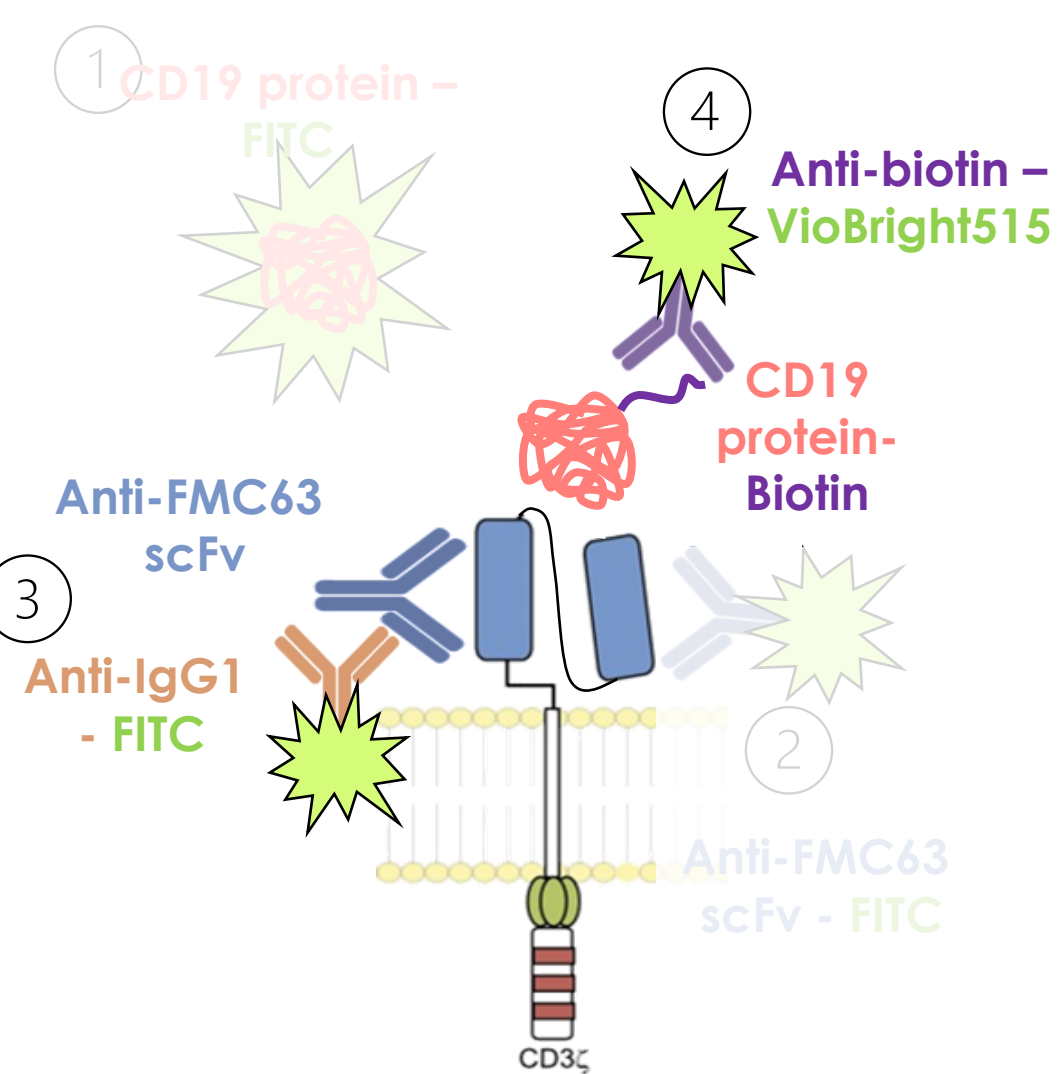
②

Anti-FMC63 scFv – FITC

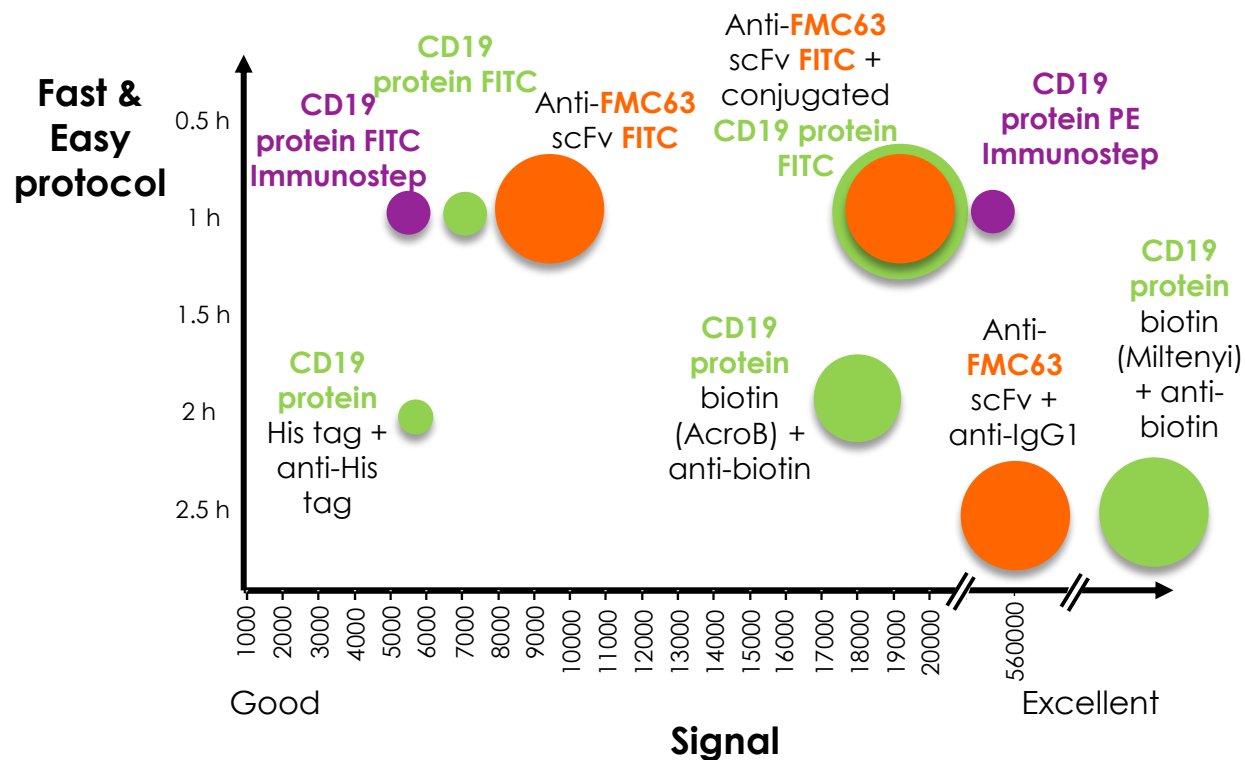
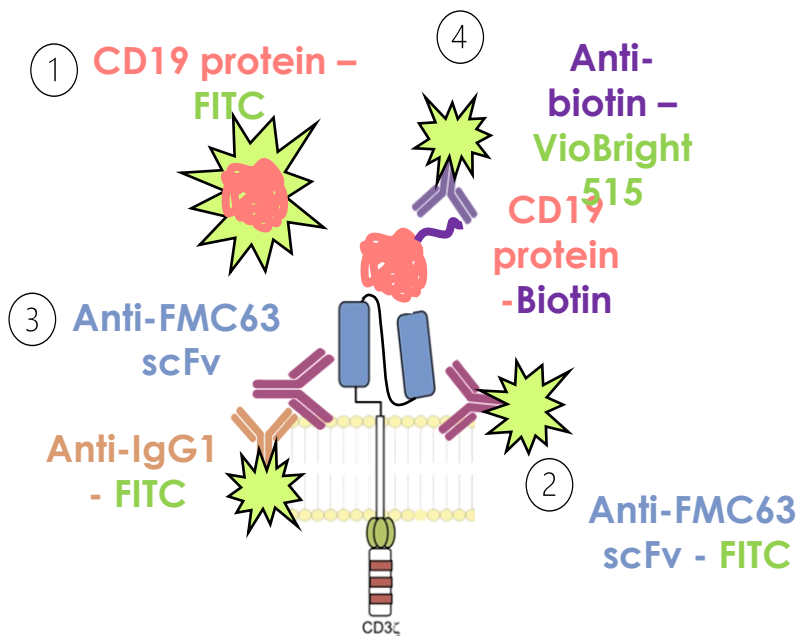


FITC / VioBright515

# Detection of CD19 CAR-T cells by NGF: different methods



# Monitoring CD19 CAR-T cells by NGF: advantages and limitations of the different approaches



- Universal for CARCD19 cells
- Only for CAR cells with FMC63 clone

- Price +